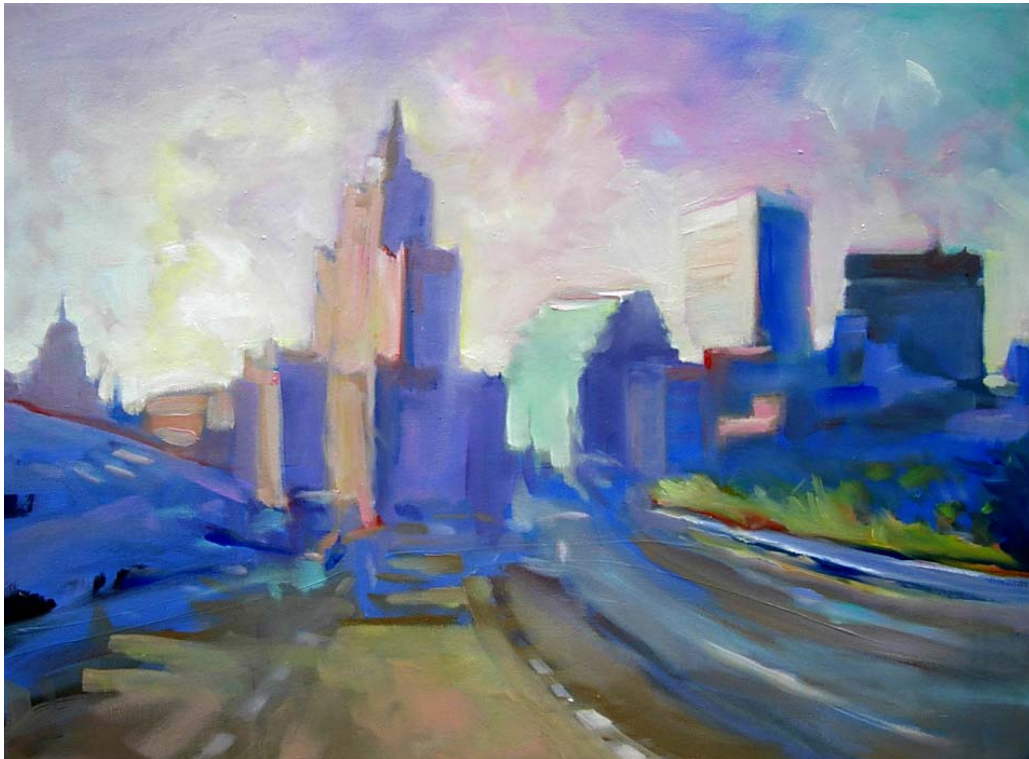


State of Rhode Island and Providence Plantations

Personnel Supplement



Fiscal Year 2009

Donald L. Carcieri, Governor

Fire Safety Code Board of Appeal and Review

	<u>Grade</u>	<u>FY 2008</u>		<u>FY 2009</u>	
		<u>FTE</u>	<u>Cost</u>	<u>FTE</u>	<u>Cost</u>
Classified					
Executive Director	3640 A	1.0	99,137	1.0	100,273
Unclassified					
Administrative Aide	4514 A	1.0	34,074	1.0	35,068
Assistant Administrative Officer	4521 A	1.0	45,316	1.0	46,810
Subtotal		2.0	79,390	2.0	81,878
Overtime			4,000		4,000
Turnover			(531)		-
Uncompensated Leave Days			(4,112)		-
Total Salaries		3.0	\$177,884	3.0	\$186,151
Benefits					
Retirement			38,043		41,765
Medical			29,843		35,280
FICA			13,601		14,241
Retiree Health			6,544		7,032
Payroll Accrual			922		977
Total Salaries and Benefits		3.0	\$266,837	3.0	\$285,446
Cost Per FTE Position			88,946		95,149
Statewide Benefit Assessment			6,361		6,922
Payroll Costs		3.0	\$273,198	3.0	\$292,368
Distribution by Source of Funds					
General Revenue		3.0	273,198	3.0	292,368
Total: All Funds		3.0	\$273,198	3.0	\$292,368